

# BioMedIT Network: Swiss Federation of Trusted Research Environments

Shubham Kapoor

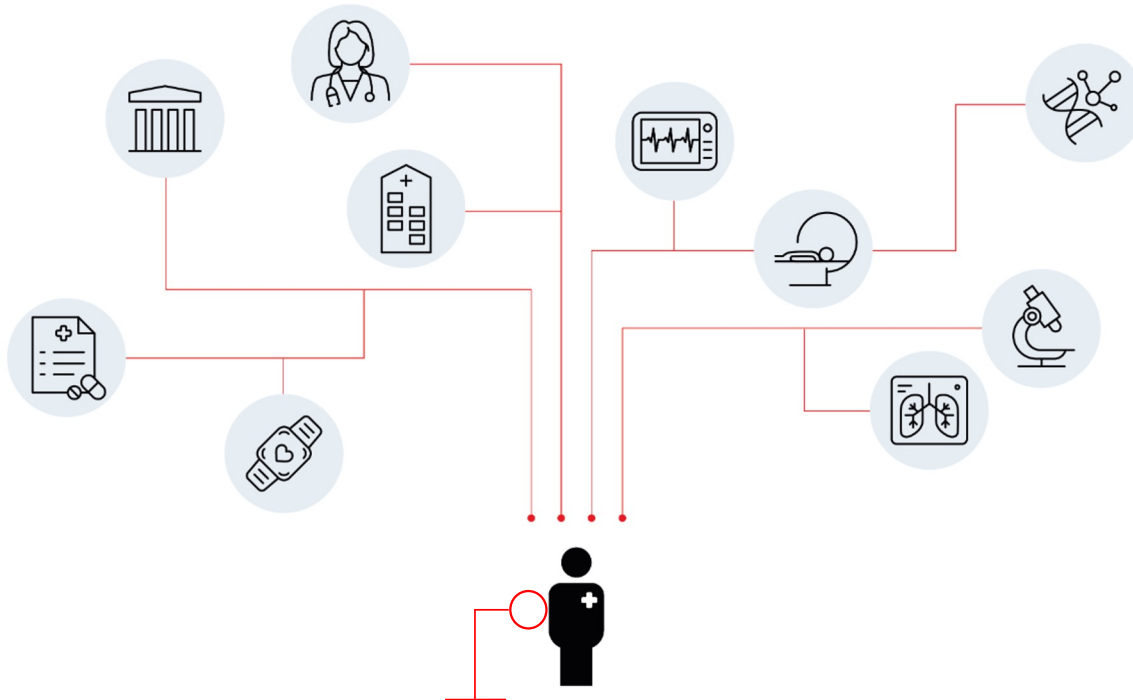
Lead BioMedIT Research IT Services & Team

SPHN Data Coordination Center

SIB Swiss Institute of Bioinformatics

A project of

# Personalized Health Research: Need for TREs



Hefty civil, criminal and administrative penalties possible otherwise.

Obligation to research subjects.

Maintain trust of public & funders.

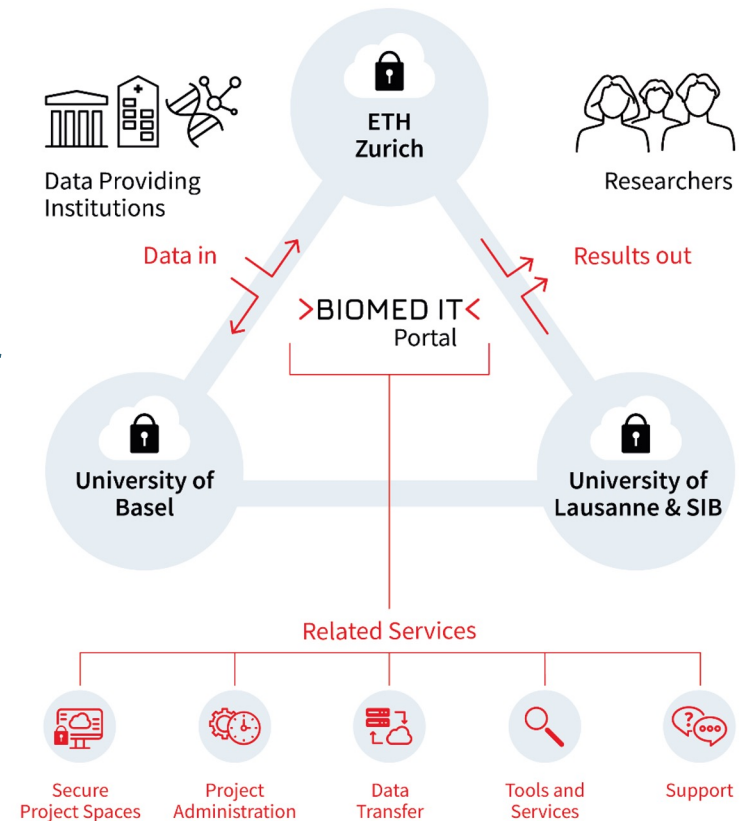
Trusted Data management solutions strengthens grant proposals.

Trust can improve subject recruitment.

Research on Personalized Health Data requires special security measures: protect individual's privacy and ensure confidentiality of data OVER THE FULL DATA LIFECYCLE

# BioMedIT: Switzerland's Trusted Research Environment

- Integral part of SPHN, Launched in 2017.
- Secure Cloud & HPC offerings.
- BioMedIT Portal as entry point, central tools and collaborative services.
- Secure mobilization, processing and storage of sensitive research data.
- 3 physical nodes providing scientific IT services.
- Central coordination (DCC).
- Operating under one Information security policy.



### Central Services

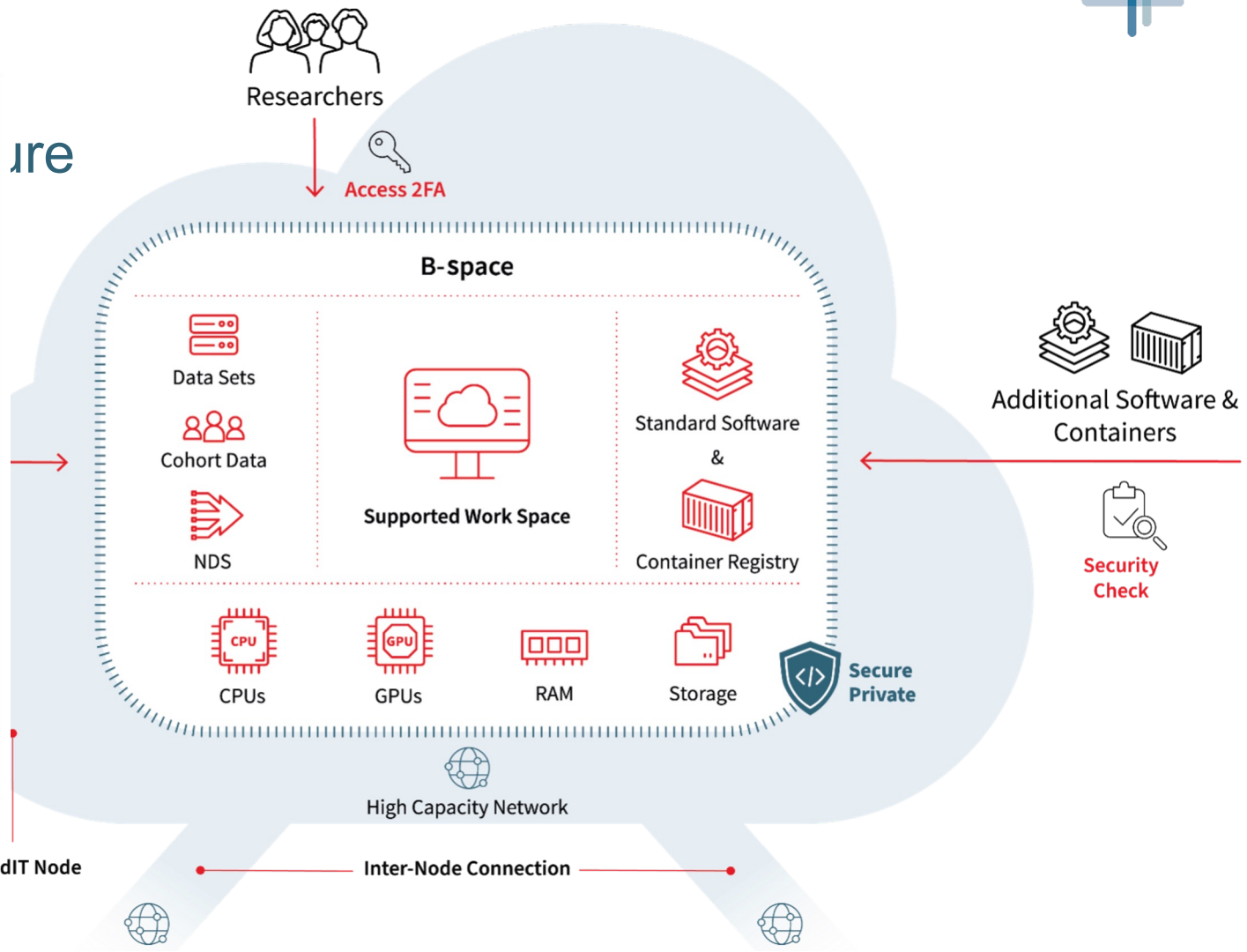
- Terminology Service
- SPHN DCC Confluence
- SPHN Schema Forge
- SPHN Federated Query System
- GitLab

>BIOMED IT< >BIOMED IT<

sett Portal

Portal git

Tools & Resources

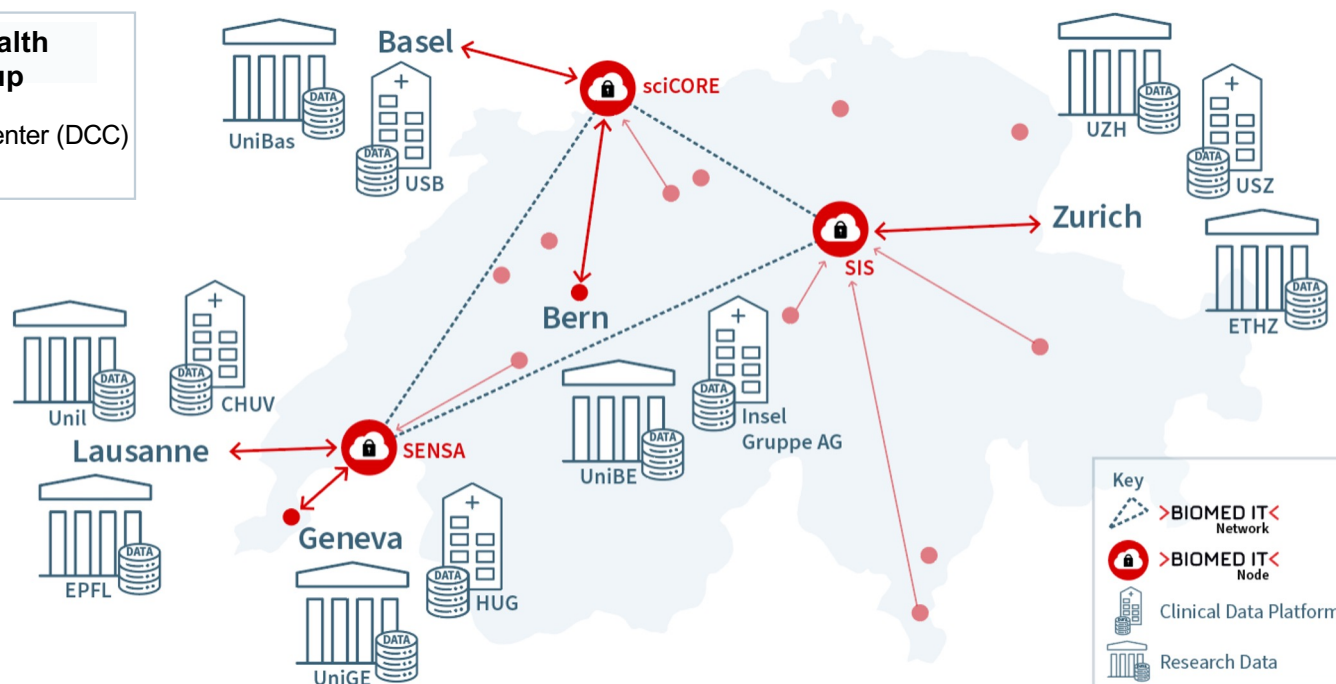


E  
r

ire

# National Landscape

**SIB** Personalized Health Informatics Group  
 SPHN Data Coordination Center (DCC)  
 BioMedIT Network



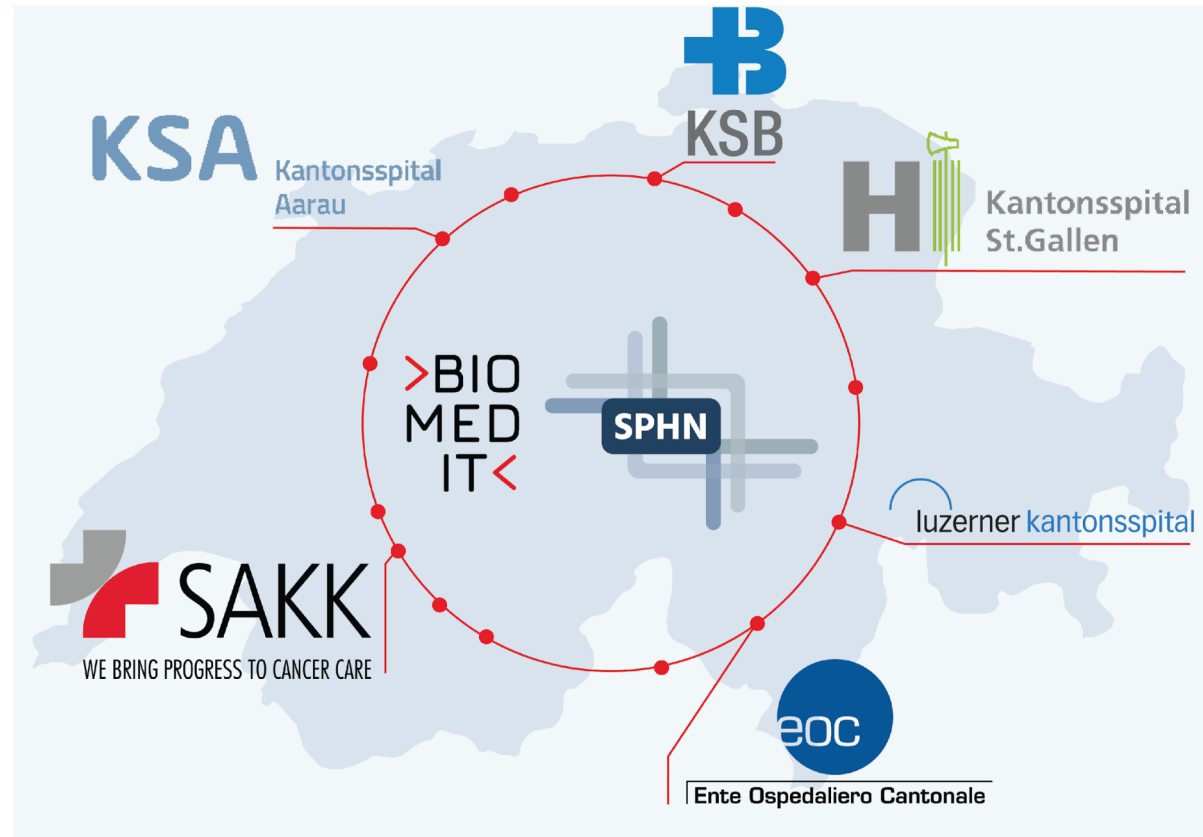
- > 120 national and international projects
- > 30 data providers connected
- > 800+ users

– Setting up of Swiss FEAGA



The screenshot shows a website header with the SIB logo (Swiss Institute of Bioinformatics) on the left and navigation links (Services, Training, Community, What's on, About, Intranet, Careers, Contact, Search Q) on the right. The main content area features a large heading: "Setting the foundation for the first Swiss archive for human genomics data" dated "24 September 2024". To the right of the heading is a logo for the "Federated European Genome-phenome Archive Switzerland". Below the heading is a paragraph of text: "A consortium of Swiss institutions launches an initiative designed to enhance human genomic research by providing a secure, legally compliant environment for the deposition and access of sensitive Swiss genomic data. This Swiss Federated European Genome-phenome Archive (Swiss FEAGA) will support scientific discoveries, facilitate data sharing, and foster collaboration across national borders. Launched under the coordination of SIB in July, as part of the SPHN initiative, this project aims to join the broader FEAGA network, with a live service expected to be operational in 2025." A small upward arrow icon is visible in the bottom right corner of the screenshot.

- Expansion of Network



– BioMedIT Whitepaper(s)



## Versatile Trusted Research Environments: An approach for Switzerland

Owen Appleton<sup>\*1</sup>, Shubham Kapoor<sup>\*1</sup>, Sergio Maffioletti<sup>4</sup>, Gregory Shomo<sup>3</sup>, Anna Wiegand<sup>4</sup>, Sofia Georgakopoulou<sup>3</sup>, Sudershan Lakshmanan Thirunavukkarasu<sup>3</sup>, Christophe Dessimoz<sup>1</sup>, Roberto Fabbretti<sup>5</sup>, Thomas Geiger<sup>2</sup>, Bernd Rinn<sup>4</sup> and Thierry Sengstag<sup>3</sup>

1 SIB Swiss Institute of Bioinformatics, 2 Swiss Academy of Medical Sciences, 3 University of Basel, 4 ETH Zurich, 5 University of Lausanne. \* Corresponding authors

### Table of Contents

Executive Summary .....	1
1. Building trust in the data-driven research landscape .....	2
1.1 Benefitting from sensitive personal data .....	2
1.2 The need for Trusted Research Environments .....	2
1.3 Whose Trust are we seeking? .....	3
2. Defining and characterising Trusted Research Environments .....	4
2.1 Elements of a Trusted Research Environment for processing sensitive personal data .....	4
2.2 Types of platform for handling sensitive personal data .....	5
2.3 Versatile TREs as a solution for research .....	6
2.4 Properties of a Versatile TRE .....	7
3. TREs in the Swiss landscape .....	8
4. Conclusions .....	9
Correspondence .....	10

### Executive Summary

Widespread adoption of versatile Trusted Research Environments (TREs) is essential for conducting research analysis involving sensitive personal data, which plays a pivotal role in advancing research across healthcare, social sciences, and humanities in order to meet societal challenges.

Despite the immense potential of sensitive data analysis, there are substantial risks linked to its use as well as



# Acknowledgements

## The SPHN Implementation Teams (MO and DCC):

Thomas Geiger, Christine Remund, Deepak Unni, Harald Witte, Jan Armida, Judit Kiss Blind, Julia Maurer, Manuela Paganini, Michaela Egli, Michael Müller-Breckenridge, Owen Appleton, Patricia Fernandez Pinilla, Regan Geissmann, Sabine Österle, Sarah Vermij, Shubham Kapoor, Sergio Guarino, Simone Guzzi, Vasundra Touré

The **SPHN NSB** and **NAB**, **Task Forces & WGs**

The **BioMedIT Board** and **workforces @** ETHZ, Unibas, Uni/SIB

The **Hospital workforces @** USZ, USB, CHUV, Insel, HUG



@SPHN\_ch



LinkedIn.com  
swiss-personalized-health-  
network-sphn



t.geiger@sphn.ch  
[dcc@sib.swiss](mailto:dcc@sib.swiss)



[www.sphn.ch](http://www.sphn.ch)  
[www.BioMedIT.ch](http://www.BioMedIT.ch)  
[www.sib.swiss/phi](http://www.sib.swiss/phi)