

BioMedIT Network: Swiss Federation of Trusted Research Environments

Shubham Kapoor

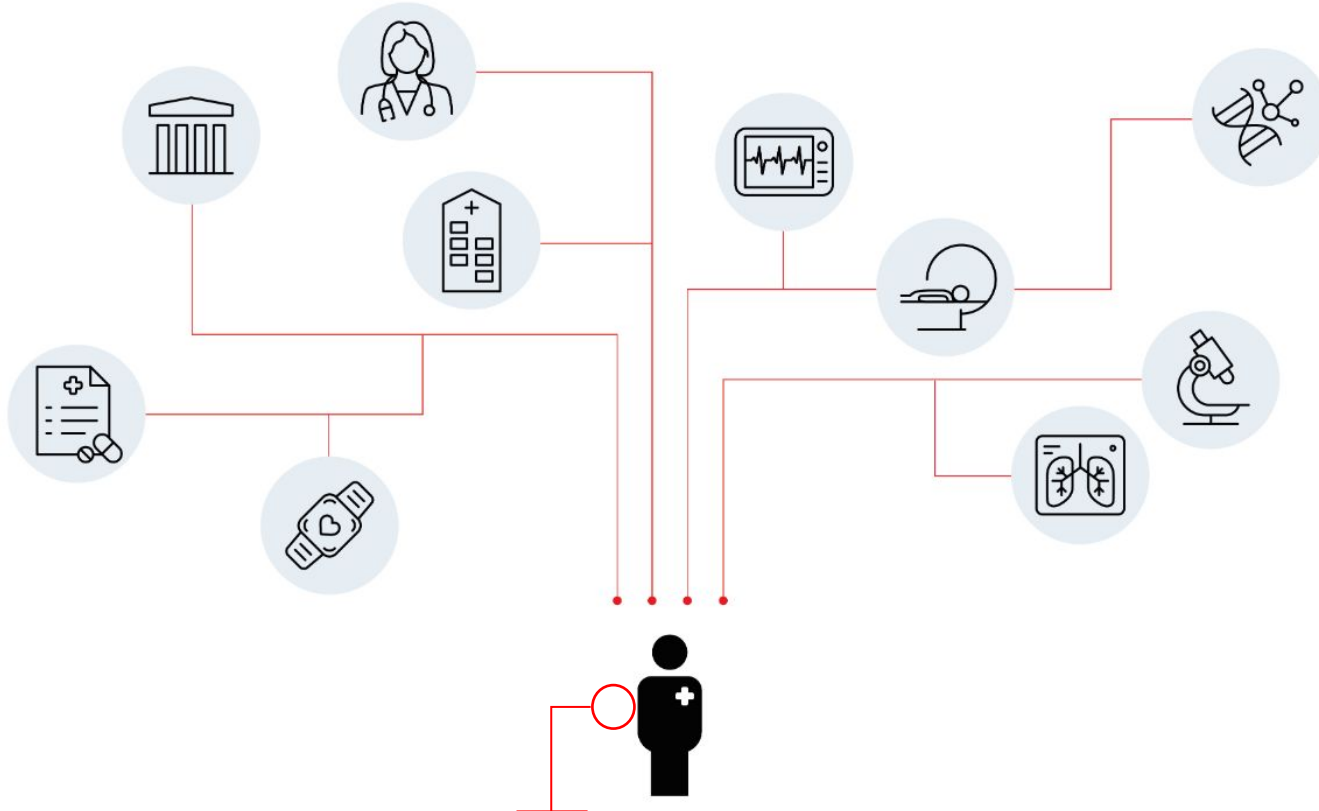
Lead BioMedIT Research IT Services & Team

SPHN Data Coordination Center

SIB Swiss Institute of Bioinformatics

A project of

Personalized Health Research: Need for TREs

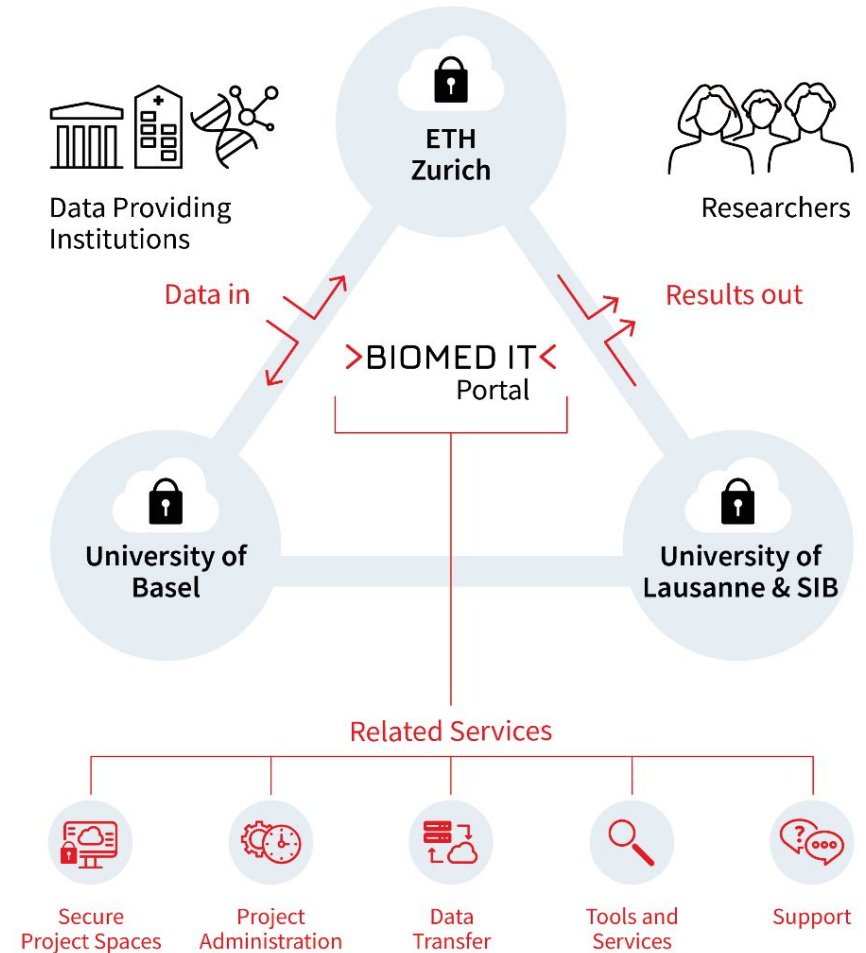


- Hefty civil, criminal and administrative penalties possible otherwise.
- Obligation to research subjects.
- Maintain trust of public & funders.
- Trusted Data management solutions strengthens grant proposals.
- Trust can improve subject recruitment.

Research on Personalized Health Data requires special security measures: protect individual's privacy and ensure confidentiality of data OVER THE FULL DATA LIFECYCLE

BioMedIT: Switzerland's Trusted Research Environment

- Integral part of SPHN, Launched in 2017.
- Secure Cloud & HPC offerings.
- BioMedIT Portal as entry point, central tools and collaborative services.
- Secure mobilization, processing and storage of sensitive research data.
- 3 physical nodes providing scientific IT services.
- Central coordination (DCC).
- Operating under one Information security policy.



E
r

Central Services

Terminology Service

SPHN DCC
Confluence

Schema Forge
SPHN Schema Forge

SPHN
Federated Query System

GitLab

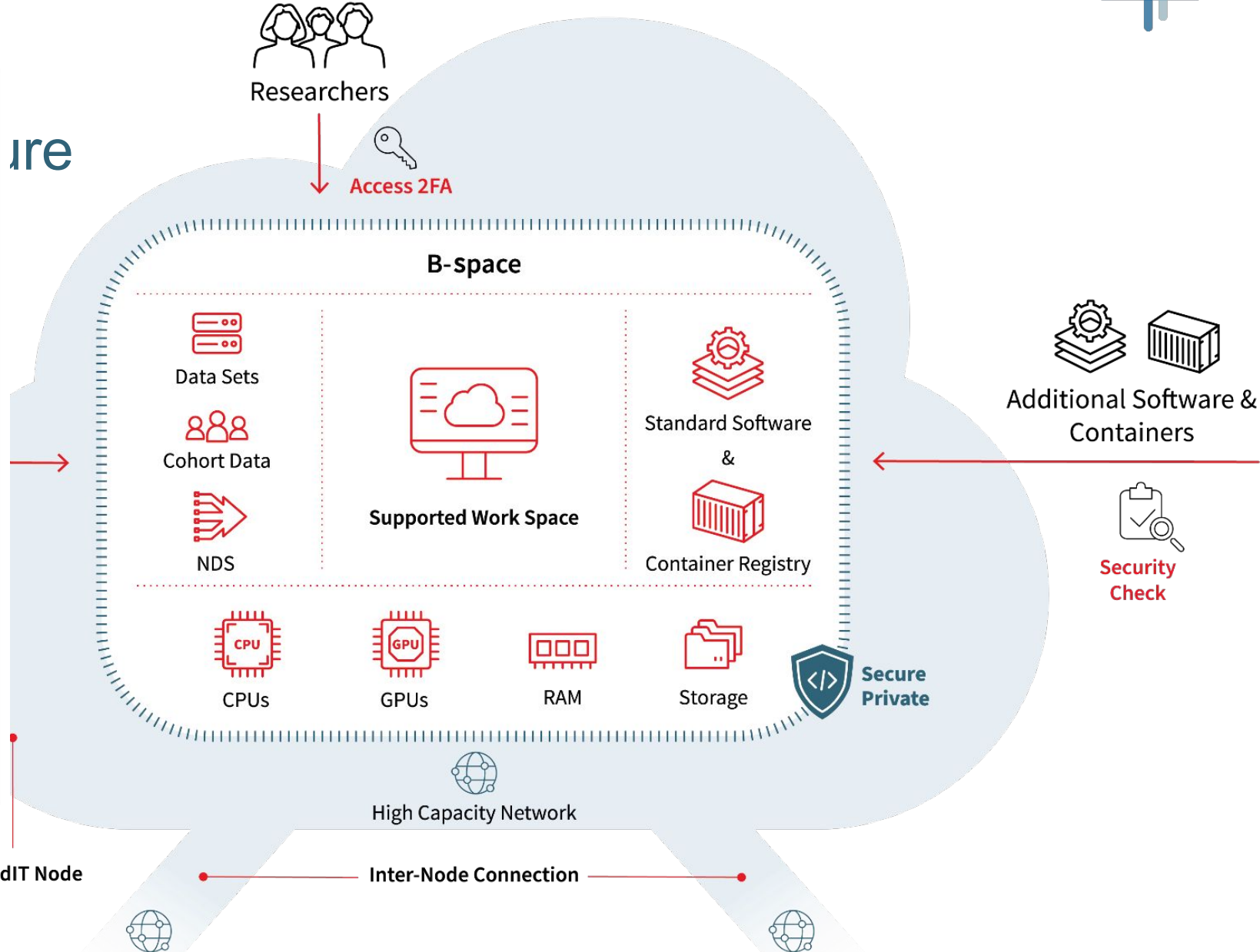
>BIOMED IT< >BIOMED IT<

sett Portal

Portal git

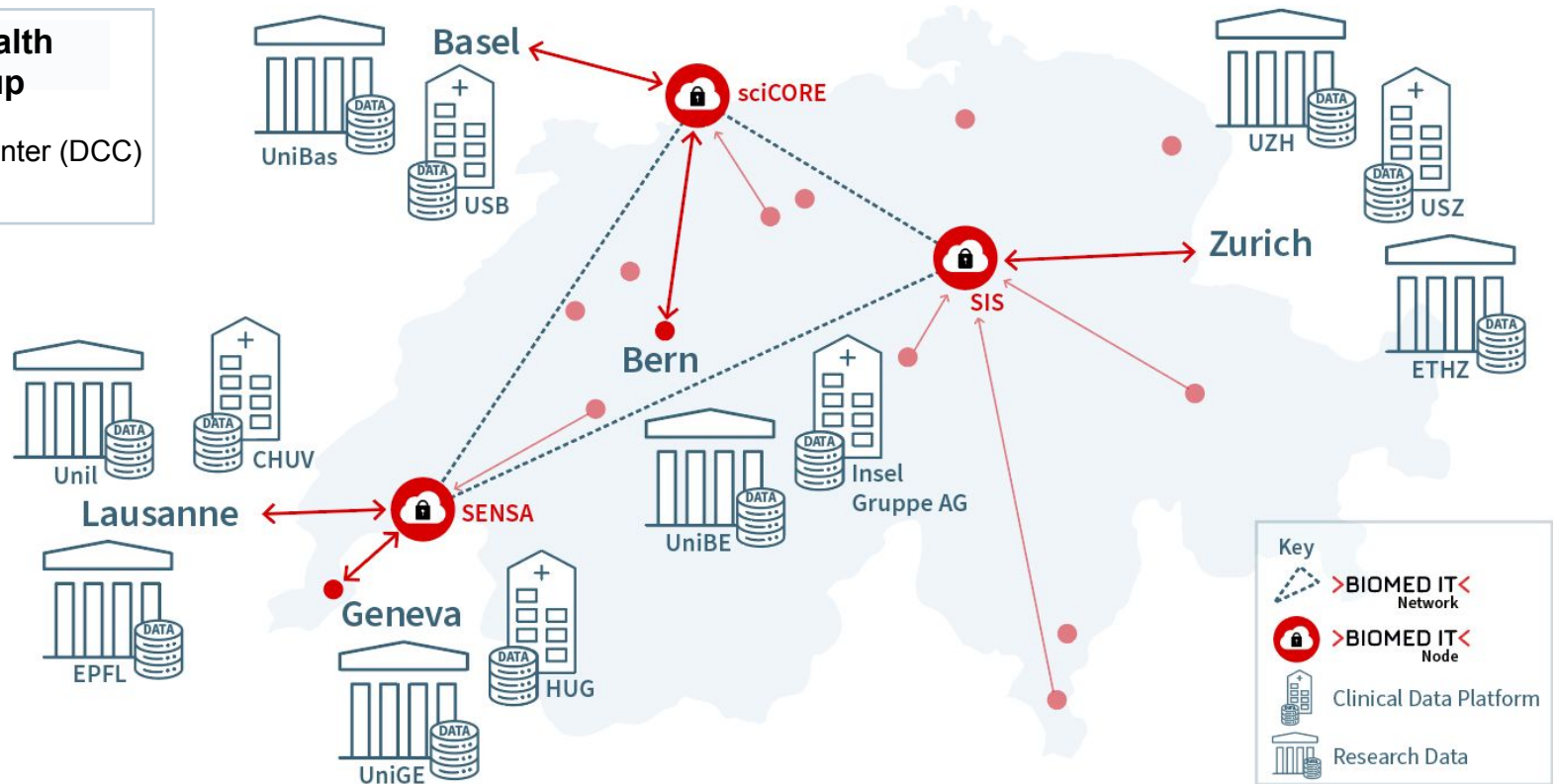
Tools & Resources

ire



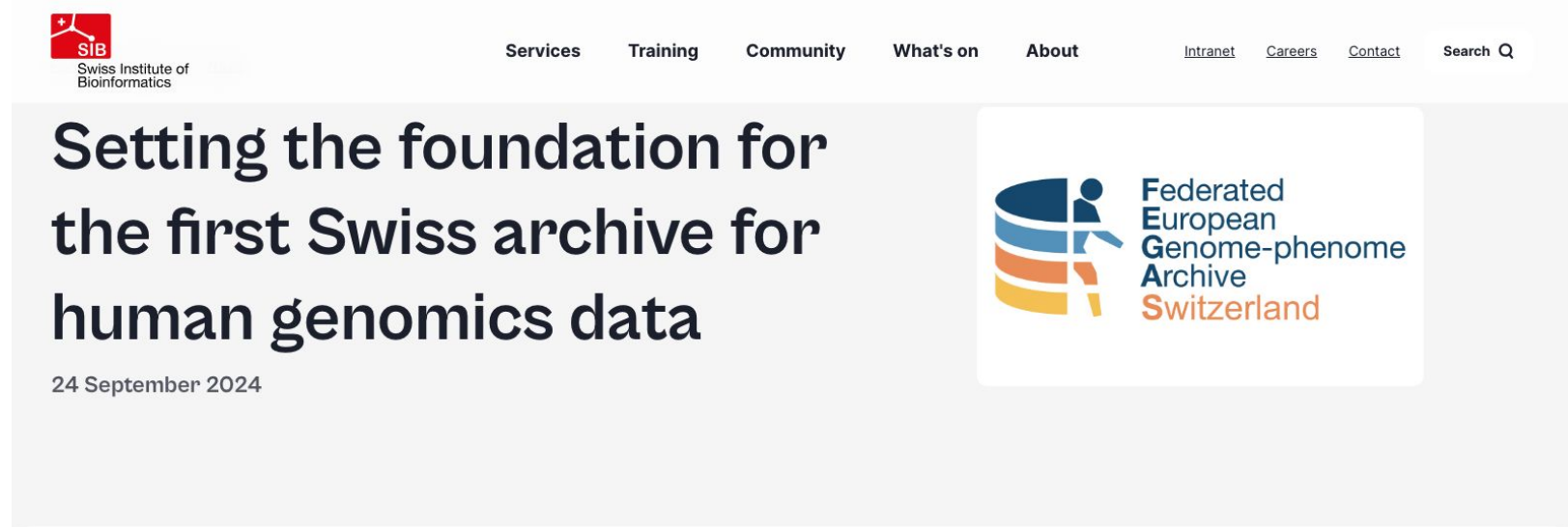
National Landscape

Personalized Health Informatics Group
SIB
 SPHN Data Coordination Center (DCC)
 BioMedIT Network



- > 120 national and international projects
- > 30 data providers connected
- > 800+ users

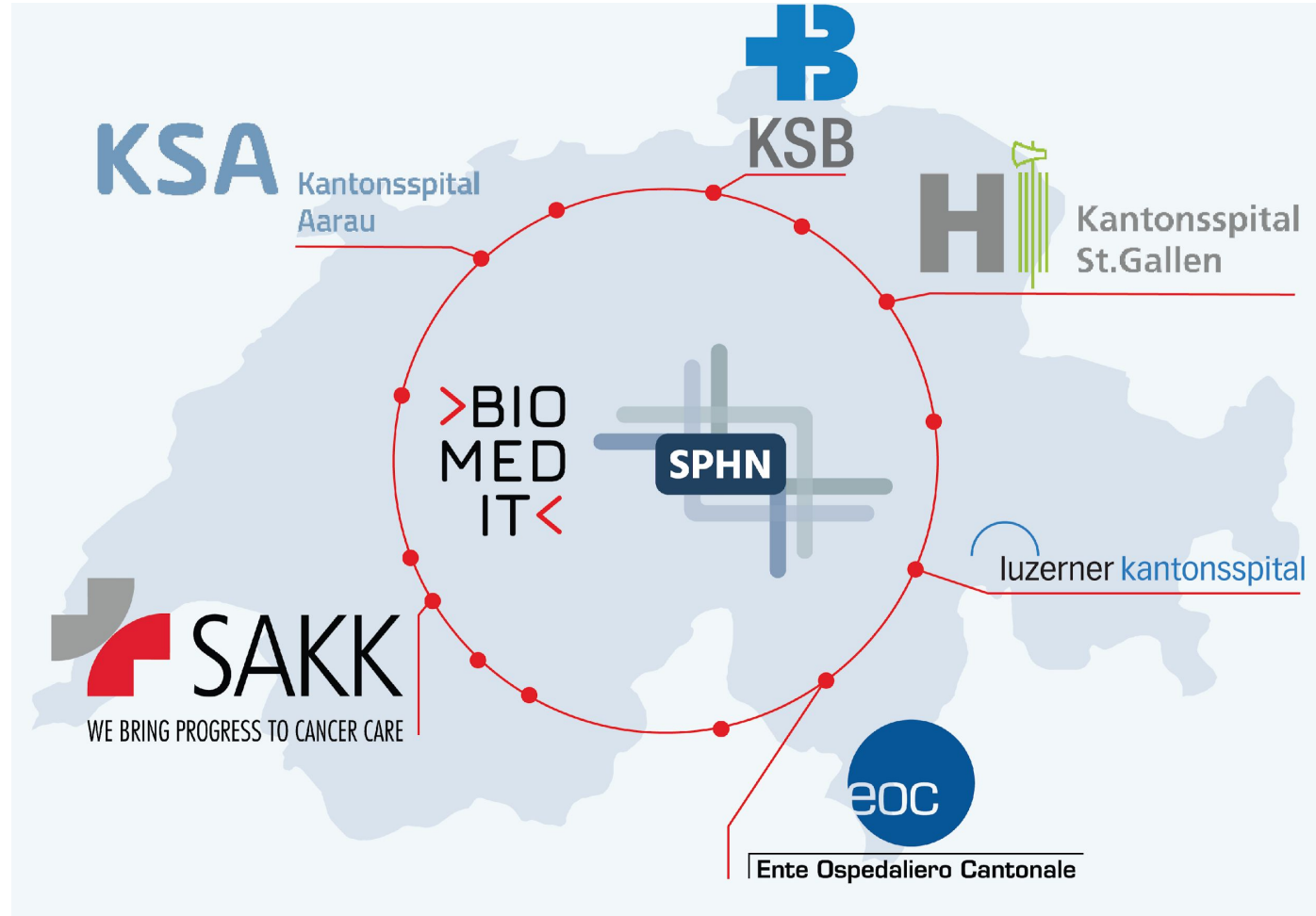
- Setting up of Swiss FEQA



The screenshot shows a news article on the SIB website. The header includes the SIB logo and navigation links: Services, Training, Community, What's on, About, Intranet, Careers, Contact, and Search. The article title is "Setting the foundation for the first Swiss archive for human genomics data", dated 24 September 2024. A featured image shows the logo for the Federated European Genome-phenome Archive Switzerland, which consists of a stylized person icon next to a database cylinder.

A consortium of Swiss institutions launches an initiative designed to enhance human genomic research by providing a secure, legally compliant environment for the deposition and access of sensitive Swiss genomic data. This Swiss Federated European Genome-phenome Archive ([Swiss FEQA](#)) will support scientific discoveries, facilitate data sharing, and foster collaboration across national borders. Launched under the coordination of SIB in July, as part of the SPHN initiative, this project aims to join the broader FEQA network, with a live service expected to be operational in 2025.

- Expansion of Network



– BioMedIT Whitepaper(s)



Versatile Trusted Research Environments: An approach for Switzerland

Owen Appleton*¹, Shubham Kapoor*¹, Sergio Maffioletti⁴, Gregory Shomo³, Anna Wiegand⁴, Sofia Georgakopoulou³, Sudershan Lakshmanan Thirunavukkarasu³, Christophe Dessimoz¹, Roberto Fabbretti⁵, Thomas Geiger², Bernd Rinn⁴ and Thierry Sengstag³

¹ SIB Swiss Institute of Bioinformatics, ² Swiss Academy of Medical Sciences, ³ University of Basel, ⁴ ETH Zurich, ⁵ University of Lausanne. * Corresponding authors

Table of Contents

Executive Summary	1
1. Building trust in the data-driven research landscape	2
1.1 Benefitting from sensitive personal data	2
1.2 The need for Trusted Research Environments	2
1.3 Whose Trust are we seeking?	3
2. Defining and characterising Trusted Research Environments	4
2.1 Elements of a Trusted Research Environment for processing sensitive personal data	4
2.2 Types of platform for handling sensitive personal data	5
2.3 Versatile TREs as a solution for research	6
2.4 Properties of a Versatile TRE	7
3. TREs in the Swiss landscape	8
4. Conclusions	9
Correspondence	10

Executive Summary

Widespread adoption of versatile Trusted Research Environments (TREs) is essential for conducting research analysis involving sensitive personal data, which plays a pivotal role in advancing research across healthcare, social sciences, and humanities in order to meet societal challenges.

Despite the immense potential of sensitive data analysis, there are substantial risks linked to its use as well as

Acknowledgements

The SPHN Implementation Teams (MO and DCC):

Thomas Geiger, Christine Remund, Deepak Unni, Harald Witte, Jan Armida, Judit Kiss Blind, Julia Maurer, Manuela Paganini, Michaela Egli, Michael Müller-Breckenridge, Owen Appleton, Patricia Fernandez Pinilla, Regan Geissmann, Sabine Österle, Sarah Vermij, Shubham Kapoor, Sergio Guarino, Simone Guzzi, Vasundra Touré

The SPHN NSB and NAB, Task Forces & WGs

The BioMedIT Board and workforces @ ETHZ, Unibas, Unil/SIB

The Hospital workforces @ USZ, USB, CHUV, Insel, HUG



@SPHN_ch



LinkedIn.com
swiss-personalized-health-net
work-sphn



t.geiger@sphn.ch
dcc@sib.swiss



www.sphn.ch
www.BioMedIT.ch
www.sib.swiss/phi