

The Swiss Personalized Health Network (SPHN) is a national initiative designed to promote the development of personalized medicine and personalized health in Switzerland. SPHN will create a dynamic network of existing data sources and will thus fund the efforts that are needed to make existing databases nationwide interoperable. The ultimate goal is to prevent, diagnose and treat unfavourable health conditions more precisely, thus reducing the risk of developing such conditions and permitting more effective treatments of disease states with fewer adverse effects.

The Swiss Academy of Medical Sciences (SAMS) was mandated by the State Secretariat for Education, Research, and Innovation (SERI) and by the Federal Office of Public Health (FOPH) to develop a Swiss Personalized Health Network (SPHN). During the period 2017–2020, priority is given to the development of a nationally coordinated data infrastructure ensuring data interoperability of local and regional information systems with special emphasis on clinical data management systems enabling effective exchange of patient data (e.g. disease phenotypes). In the long-term, public health and healthy citizen data will also be integrated. Overall, a national coordinated data infrastructure will optimize the use of health data for personalized health related research.

SPHN integrates relevant clinical and basic research institutions and research support organizations

The SPHN project organization involves partners at the national level, at the technical level, and at the institutional level (Figure 1). SAMS is the overarching body of the project.

The **National Steering Board (NSB)** is the highest governing body of SPHN and is responsible for the overall strategy, for maintaining regular contacts to the superordinate political authorities and for external communications in coordination with SAMS. It includes representatives from key institutions in Switzerland (e.g. University Hospitals, Universities, ETH-Domain, swissuniversities, FOPH, SNSF). The integration of representatives from additional institutions (e.g. private hospitals, health insurances, industry) is foreseen in the future. The members of the NSB are appointed by SAMS.

The **NSB Ausschuss (AS)** has the duty to prepare the meetings of the NSB and meets regularly to advance activities, process information, and enable more effective management of the SPHN as a whole. It is composed of the heads of the SPHN bodies.

Please note that the relevant documents mentioned in this factsheet (e. g. Funding Principles, Funding Regulations) are published on the SAMS website and on the SPHN website.

The **Scientific Expert Board (SEB)** is a scientific advisory group to the NSB and comprises experts from a variety of disciplines.

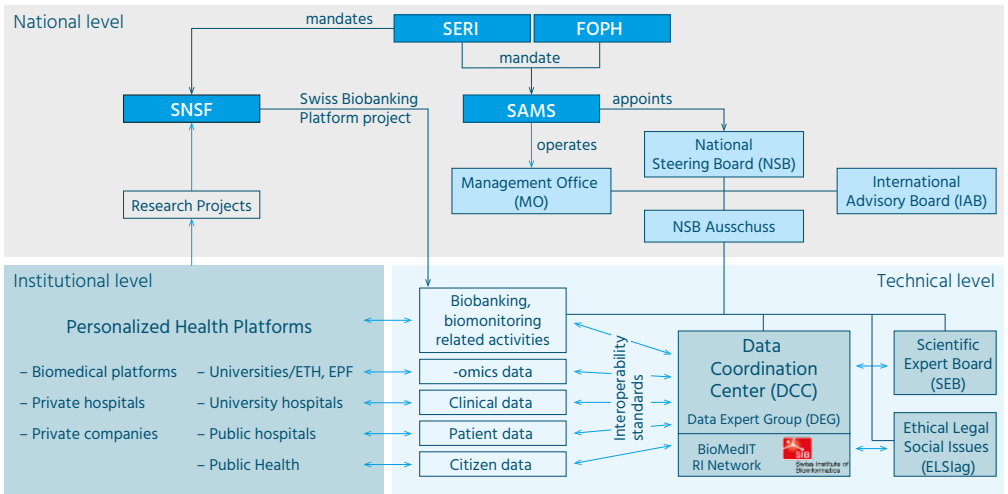
The **Data Coordination Center (DCC)** is managed by SIB and is responsible for the definition of common technical data standards, harmonization of semantics, data storage formats, data security, data management and quality control. The DCC closely collaborates with university and hospital IT departments, biobanks, and the registries of existing and new cohorts. In essence, the DCC drives the interoperability of the various clinical and -omics data.

The **ELSI advisory group (ELSIag)** addresses ethical, legal and social challenges that SPHN will face. It is composed of experts from various relevant fields such as bioethics, life sciences law and social sciences. It also includes representatives of SAMS, swissethics, and patient advocacy groups.

The **International Advisory Board (IAB)** is composed of international experts. The board provides advice, expertise, and peer-review of funding proposals and of the initiative as a whole.

Finally, the **Management Office (MO)** is operated by SAMS and is in charge of the administrative and daily operation of the initiative such as preparation of the meetings of the various boards, controlling, budgeting and reporting.

Figure 1: SPHN organization chart



→ **SPHN starts with public institutions (e.g. University Hospitals, Universities, ETH-Domain) and shall be extended later to private hospitals and private companies.**

The legal and organizational framework is defined by the SERI-SAMS service contract

SAMS and SERI have signed a service contract for the period 2017–2020. SAMS is thus the legal entity responsible for the good governance of the SPHN initiative. The service contract together with the Rules of Procedure, the Funding Principles, and the Funding Regulations define the overall framework of the initiative.

On this basis, the Swiss Government has allocated a total of CHF 68 million to the SPHN initiative for the first period 2017–2020 of which 50 million are under the responsibility of the NSB and SAMS. The remainder is dedicated to the BioMedIT project which is under the responsibility of SIB. The matching funds principle applies to all financial contributions, i.e. the participating institutions must provide their own contributions (in cash and/or in kind) to match the funds provided by SPHN.

	Item	CHF	Description
1.	Management, bodies, symposia, workshops, etc	4.0 mio	Limit of expenses (Ausgabenplafond)
2.	Instruments Infrastructure implementation projects Infrastructure development projects 'Driver' projects	46.0 mio	Total engagements (Verpflichtungskredit)
3.	BioMedIT	18.0 mio	Limit of expenses (Ausgabenplafond)

SPHN funds the development of infrastructure via three instruments

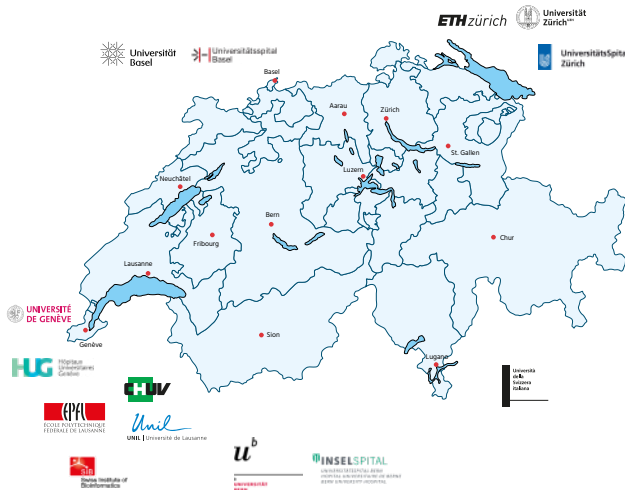
Based on the Funding Principles and Funding Regulations, SPHN supports projects that fall into one of the following instruments.

Instrument	Description	Funding scheme
Infrastructure implementation projects	Projects that are devoted to build a progressive shareable data system enabling nationwide interoperability of molecular and clinical patient data.	Collaboration Agreements
Infrastructure development projects	Projects that thrive to develop and test new technologies, methods and infrastructures for personalized health related research in connection with infrastructure implementation.	Call for proposals
'Driver' projects	These projects are based in a concrete research field (e.g. oncology/ immunology) and will push the development of clinical data management systems in all University Hospitals by testing data interoperability & data sharing principles within the whole network.	Call for proposals

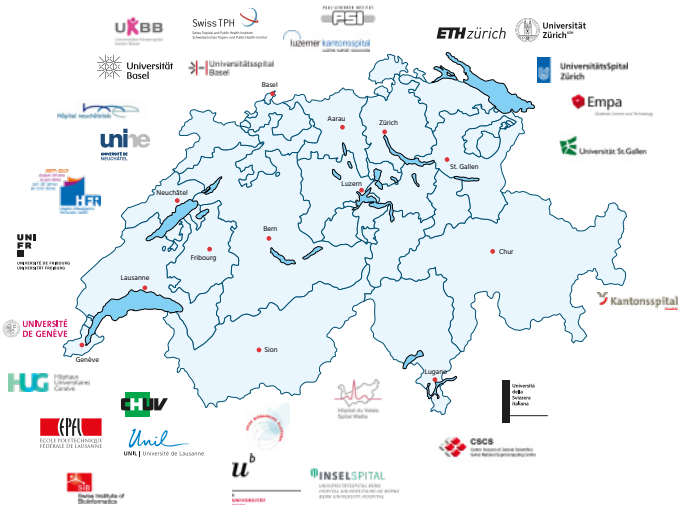
To take advantage of the entire ecosystem, the calls for proposals were coordinated with the ETH-Domain SFA PHRT program. The SNSF also supports projects in personalized health research through competitive calls across existing instruments (no ear-marked funding).

→ Information about projects supported by SPHN is available at: sphn.ch/en/projects.html

Swiss Personalized Health Network



SPHN starts with the University Hospitals, the Universities, the ETH-Domain.



SPHN shall be progressively extended to other public institutions.
Private hospitals and private companies shall be included later.

Swiss Personalized Health Network

Haus der Akademien | Laupenstrasse 7 | CH-3001 Bern
T +41 31 306 92 95 | info@sphn.ch | www.sphn.ch

A project of: SAMWASSM